

483,990 SF

Industrial Space For Lease



Prologis Lehigh Valley East



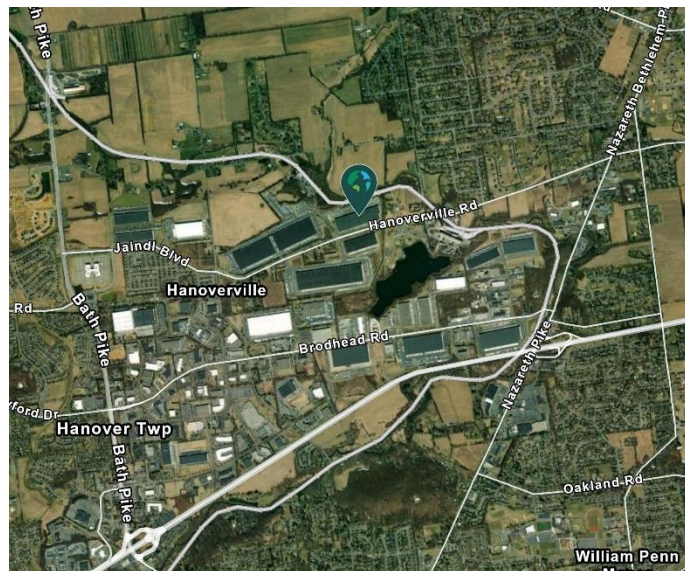
4770 Hanoverville Road
Bethlehem, PA 18020 USA

LOCATION

- Located in the heart of the Lehigh Valley, PA market immediately off of the Route 22 & Route 512 interchange
- Close proximity to major transportation arteries: Route 22, I-78, I-476, and Route 33

FACILITY

- 483,990 SF total building size
- Available April 1, 2024
- 36' clear height
- (67) 9' x 10' fully equipped loading doors
- (1) 12' x 14' drive-in door
- 53' x 56' column spacing
- 12,180 SF existing main offices (5,742 SF in NW corner and 6,438 SF in SW corner)
- 4,742 SF existing shipping/receiving office
- 303 auto parking spaces
- 99 trailer parking spaces
- 185' truck courts with 60' concrete aprons
- Single-side load configuration
- 4,000 amps, 277/480-volt electric service
- ESFR sprinkler system



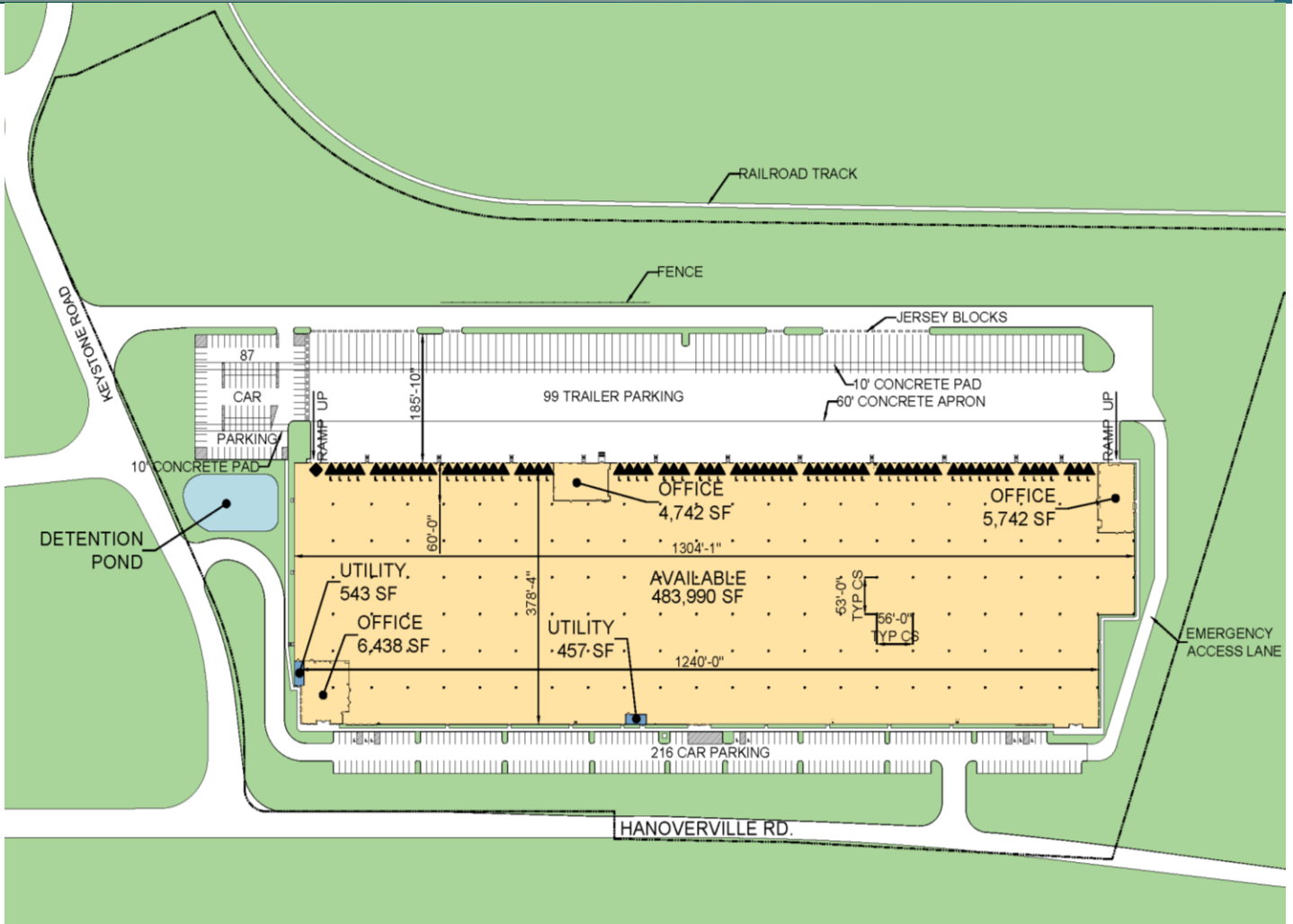
Your single-source service for efficient move-in and operations: [prologisessentials.com](https://www.prologisessentials.com)

483,990 SF

Industrial Space For Lease



Prologis Lehigh Valley East



JLL
Larry Maister
larry.maister@jll.com
ph +1 610 249 2297
550 E Swedesford Road
Suite 260
Wayne, PA 19087 USA

JLL
Jeff Lockard
jeff.lockard@jll.com
ph +1 215 990 1889
550 E Swedesford Road
Suite 260
Wayne, PA 19087 USA

JLL
Ryan Barros
ryan.barros@jll.com
ph +1 610 249 2264
550 E Swedesford Road
Suite 260
Wayne, PA 19087 USA

JLL
Jeff Williams
jeff.williams@jll.com
ph +1 215 284 2026
550 E Swedesford Road
Suite 260
Wayne, PA 19087 USA

Prologis
Bill Mehl
wmehl@prologis.com
ph +1 610 530 2866
cell +1 610 533 2300
400 Boulder Drive
Suite 200
Breinigsville, PA 18031 USA